

Helping you fix it right the *first* time - *every* time

## Subframe Adapter PWK07AODYS0 No Longer Available

**Currently Applies To:** '99–04 Odyssey

Ordering Subframe Adapter (T/N PWK07AODYS0) from the Honda Tool and Equipment Program? You'll find it's no longer available. This tool has been superseded by the Universal Subframe Adapter (T/N VSB02C000016) and it's being removed from the list of required tools for Honda dealerships.



T/N PWK07AODYS0



T/N VSB02C000016

The VSB02C000016 has enough adjustability to handle the subframes in these Odysseys.

## O/M Error Alert: Outdated iPod Compatibility Table

**Currently Applies To:** '09 Civic, '09 Civic Hybrid, '09 Element, '09 Fit, and '09 Pilot

Just so you know . . . the iPod compatibility table was recently revised to update the model info and make it easier to understand. This makes the one in the applicable O/M out of date. Here's how that table should now look:

Model	Software
Fifth Generation iPod (2005 or later)	Version 1.2 or later
iPod classic (2007 or later)	Version 1.0 or later
iPod nano	Version 1.2 or later
iPod nano (2nd generation)	Version 1.1.2 or later
iPod nano (3rd generation)	Version 1.0 or later
iPod touch	Version 1.1.1 or later
iPhone	Version 1.1.1 or later

**NOTE:** Some devices will not display the Honda logo when connected to the USB adapter cable.

This revised table will be included in future O/Ms.

## Seat-Back Recline Problems? Replace the Recline Motor, *Not* the Seat-Back

**Currently Applies To:** '08 Accord Coupe EX-L and EX-L V6

We've been getting reports that some service customers are complaining of various problems with the power seat recline motors. We're aware of these problems and are currently working on a fix.

If you find the recline motor is bad, replace just the motor, **not** the entire seat assembly. Many dealerships are doing this when the recline motor was the real culprit. (Talk about throwing out the baby with the bath water!)

Honda parts stock carries separate recline motors just for this purpose. Order P/N 81612-TE0-A01, H/C 8733792.

## Don't Overtighten Those Battery Hold-Down Nuts

Installing a battery? Take it easy on those hold-down nuts. If you overtighten them, you'll put too much stress on the battery case, which can cause it to deform and the inner seals to separate. Leaking inner seals can shorten battery life.

A good rule of thumb to follow is to tighten the nuts just enough so the hold-down doesn't budge when you try to wiggle it.

HOLD-DOWN



NUTS

## Steering Wheel Shimmy, Vibration, Tire Noise at PDI

**Currently Applies To:** All '09 models

If a vehicle has been sitting out for a long time—especially in cold weather—its tires can develop flat spots. These flat spots can cause steering wheel shimmy, vibration, and tire noise that's really noticeable during the test drive at PDI.

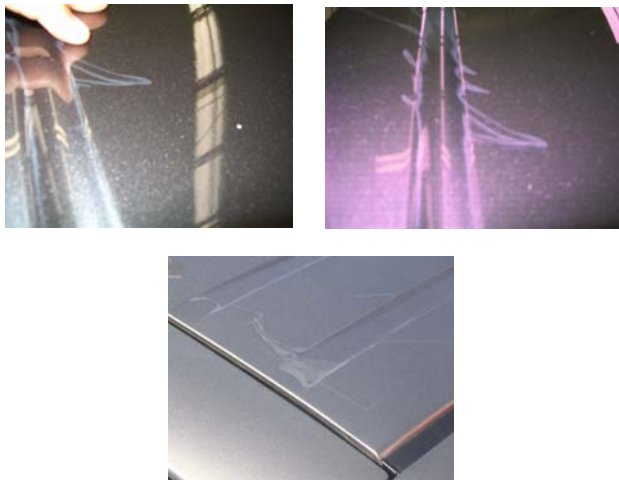
These flat spots are just temporary and will usually smooth out after about **10 miles** of highway driving. But if those symptoms are still there after driving that distance, there may be other forces at work.

To find and fix the problem, be sure to check out the five-part series "Excessive Steering Wheel Shimmy or Chassis Vibration" in the October '07 thru February '08 issues of *ServiceNews*. You'll find lots of good info there to help you.

## Moisture Under Plastic Protective Covering Can Make Paint Look Bad

**EDITOR'S NOTE:** This article replaces "Stained Paint Under the Wrap Guard? It's Just Trapped Moisture" in the March '08 issue of *ServiceNews*.

Trapped moisture under the Wrap Guard white plastic protective covering can penetrate the clear coat, making even the best factory paint job look stained, fogged, or discolored. Here's what trapped moisture looks like on bodywork with the Wrap Guard removed:



The same thing also applies to trapped moisture under the plastic protective covering on painted wheels. Here's what that looks like with the covering removed:



Fortunately, there's an easy fix for this problem, and all you need is a heat gun. Just carefully warm the paint with the Wrap Guard or plastic covering removed, and that trapped moisture evaporates. To avoid damaging the paint or any nearby plastic or rubber parts, apply the heat in a circular motion over the affected area and make sure the surface temperature stays **under 180°F**.

You may need to do this heat treatment more than once to get rid of that moisture . . . so just be patient and take your time.

## S/M Fix: Roof Molding Replacement, '06-09 Ridgeline

### Currently Applies To: '06-09 Ridgeline

We've come up with an improved method for replacing roof moldings that ensures they stay securely in place. The next release of the S/M will include this procedure, but until then . . . here's the lowdown:

1. Starting at the front, use a trim tool with a shop towel to pry up the roof molding, then slide it forward to release it from under the rear roof trim.
2. Use a pair of long-nose pliers to remove the three clips from the roof channel. Discard the clips.
3. Install a new front clip onto the roof molding with its hooks facing toward the rear.

Install front clip to roof molding.



4. Install new center and rear clips onto the **rear** studs of the roof channel with their hooks facing toward the rear.

Install clip on rear stud.



5. Insert the end of the roof molding under the rear roof trim.

6. Starting at the front, carefully line up the hole in the front clip with the **front** stud in the roof channel. Then working your way back, push down on the molding so the center and rear clips snap firmly into place.

Align hole in clip with the front stud.



Snap the clips into place.



7. Repeat steps 1 thru 6 for the other roof molding.

This procedure will also be incorporated into ISIS.

---

## SRS DTCs 32-xx and 31-xx Are Strictly About the Side Airbags

**Currently Applies To:** '03–09 Accord, '06–09 Civic, '05–09 CR-V, '07–09 Element, '07–09 Fit, '03–09 Odyssey, '05–09 Pilot, and '06–09 Ridgeline

We're getting reports that, when troubleshooting an SRS DTC 32-xx (problem in front passenger's side airbag inflator), service techs are mistaking the term "front passenger's side airbag" to mean "the airbag on the front passenger's side," namely, the front passenger's airbag in the dashboard. This is causing needless replacement of the front passenger's airbag.

A DTC 32-xx is strictly about the front passenger's **side airbag**—the one in the front passenger's seat-back. It's got nothing to do with the airbag in the dashboard. Keep this in mind when troubleshooting any of these DTCs.

The same thing applies if you're troubleshooting an SRS DTC 31-xx (problem in the driver's side airbag inflator). A DTC 31-xx is strictly about the driver's **side airbag** in the driver's seat-back. It's got nothing to do with the driver's airbag in the steering wheel.



©2009 American Honda Motor Co., Inc. - All Rights Reserved. Published by AHM Parts and Service Communications, 1919 Torrance Blvd., Torrance, CA 90501-2746. All suggestions become the property of American Honda Motor Co., Inc.; sending a suggestion gives Honda permission to publish it without further consideration.

ASN 41098 (0901)

