

Crash Test Results

New Car Safety

HONDA CR-V

From Oct 2012 Front+side+head airbags



ANCAP

Safety ★★★★★

**Safety
Rating**

Occupant Protection Score 35.91 out of 37

Variant: Luxury 4WD

Eng: 2.4 petrol

Kerb mass: 1610 kg

Category: SUV - MEDIUM

Vehicles built: 2012

Model History and Safety Features

The tested model of the Honda CR-V was introduced in Australia in October 2012. This rating is based on ANCAP crash tests of the 4WD variant. ANCAP was provided with evidence that two-wheel drive variants provide comparable occupant protection.

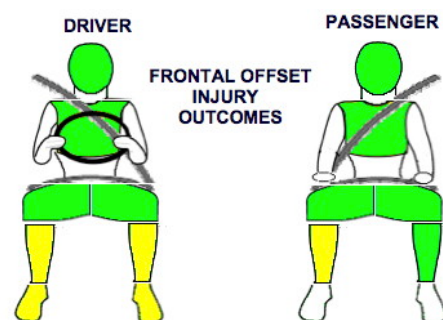
Dual front airbags, side airbags and head-protecting side curtains are standard equipment. Antilock brakes (ABS), electronic brake distribution (EBD) and electronic stability control (ESC) are also standard. Advanced seat belt reminders are fitted to all seats.

Pretensioners are fitted to the front seat belts to reduce slack in the event of a crash.

OCCUPANT PROTECTION: 5 Stars

The CR-V scored 14.91 out of 16 in the offset crash test. The passenger compartment held its shape well. There was a slight risk of serious leg injury for the driver and front passenger. All other injury values were good.

The vehicle scored 16 out of 16 in the side impact crash test and a further 2 points in the pole test.



**Whiplash
Protection**
(RCAR Protocol)



Offset crash test at 64km/h

FRONTAL OFFSET CRASH TEST

Body region scores out of 4 points each: Head/neck 4 pts, chest 4 pts, upper legs 4 pts, lower legs 2.91 pts.

The passenger compartment held its shape well in the offset crash test. The park-brake pedal moved rearwards by 114 mm and upwards 98 mm. The steering wheel hub moved 34mm forward, 5 mm upward and 11 mm sideways. The front ("A") pillar moved 2 mm rearwards. All doors remained closed during the crash. After the crash all doors could be opened with normal effort.

The airbag cushioned the head of the driver and contact was stable. The passenger's head was cushioned by the airbag. There were no knee hazards but there was a risk of injury to the driver's lower left leg due to a metal bracket that became exposed during the crash. No points were deducted for this risk.

SIDE IMPACT CRASH TEST

Body region scores out of 4 points each: Head 4 pts, chest 4 pts, abdomen 4 pts, pelvis 4 pts.

The vehicle earned maximum points in the side impact and pole tests.

PEDESTRIAN PROTECTION: MARGINAL

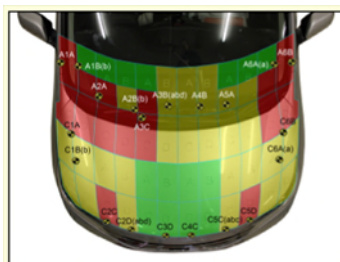
Results were mixed for the Child and Adult test areas. The Upper Leg area performed poorly. The bumper area performed well only in the central areas.

PEDESTRIAN PROTECTION

MARGINAL

v5.3

Child head impacts	7.31
Adult head impacts	5.40
Upper leg impacts	0
Lower leg impacts	4
Total (out of 36)	17



Child and adult head impact



Adult leg impact (upper and full legforms)

pass

marginal

fail

OCTOBER 2012

PO Box 4041

Manuka ACT 2603

crv12.doc Rated: 2012

Issued 16/10/2012 b



ANCAP

Crash testing for safer

AUSTRALASIAN
NEW CAR ASSESSMENT
PROGRAM

www.ancap.com.au

TECHNICAL DATA - HONDA CR-V - From October 2012

INJURY MEASUREMENTS

Body region	Offset Crash Test at 64km/h (v5.1)		Side Impact Crash Test at 50km/h (v5.1)
	Driver	Passenger	Driver
Head HIC	452	294	28
Acceleration (g for 3ms)	60.4	47.8	18.0
Neck - Shear (kN)	0.71	0.49	-
Tension (kN)	1.02	0.99	-
Extension (Nm)	26.4	11.9	-
Chest Accln (g for 3ms)	38.50	37.00	-
Compression (mm)	19.50	17.90	10.10
Viscous criterion (m/s)	0.06	0.04	0.04
Abdomen - Force (kN)	-	-	0.200
Pelvis - Force (kN)	-	-	0.920
Upper legs Force (kN)	Left	0.19	0.93
	Right	0.37	1.82
Knee displ (mm)	Left	0.41	0.82
	Right	0.48	0.58
Lower legs Force (kN)	Left	1.39	1.66
	Right	1.96	2.07
Index (Upper/Low)	Left	0.42 /0.31	0.17 /0.20
	Right	0.38 /0.18	0.42/0.26

Bonus points (maximum 5)

Pole Test: 2 pts

Seat belt reminders: 3 (see table below for details)

Modifiers - deductions from offset test scores

Head	No deduction
Chest	No deduction
Upper leg	No deduction
Lower leg	Upward pedal movement
Foot score	Rearward pedal movement
	1 pt deduction
	Score 3.06 points

Note: Steering column and pedal movements are measured relative to the driver's seat.

Modifiers - deductions from side impact test scores

Chest	No deduction
-------	--------------

Safety features

These specifications are subject to change. Please check with manufacturer for the latest specifications.

Driver airbag	S	Antilock (ABS) brakes / Electronic brake distribution / Brake Assist	S/S/S
Passenger front airbag	S	Electronic stability control (ESC, VSC, DSC, ESP, VSA)	S#
Side airbags, front seats - chest protection	S	3 point seat belt for all forward-facing seats	S
Side airbags, front seats - head protection	S	Whiplash rating (RCAR protocol)	Good
Side airbags, rear seats - head protection	S	Intelligent seat belt reminder - driver	S
Driver knee airbag	X	Intelligent seat belt reminder - front passenger	S
Seat belt pretensioners (Front/rear outboard)	S	Intelligent seat belt reminder - rear seats	S

Key:

S = standard on all variants

O = optional on base variant. May be standard on higher variants

V= not available on base variant but standard or optional on higher variants

X = not available on any variant

ESC required by ANCAP for 5 star rating from 2008



ANCAP

Crash testing for safety

AUSTRALASIAN
NEW CAR ASSESSMENT
PROGRAM

www.ancap.com.au