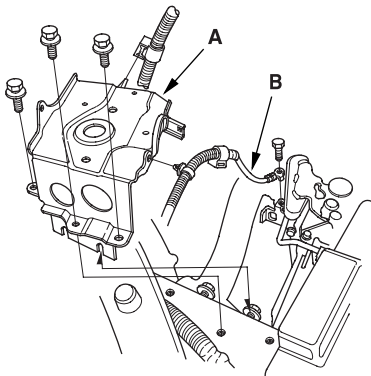




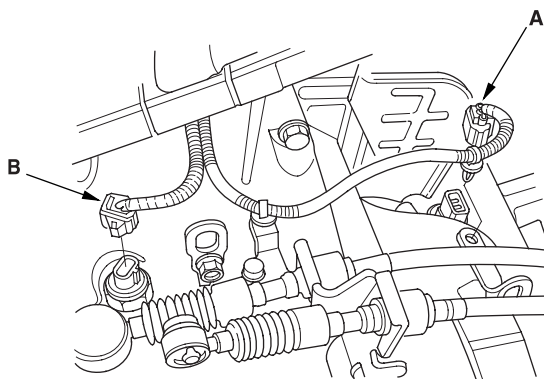
## Transmission Removal

NOTE: Use fender covers to avoid damaging painted surfaces.

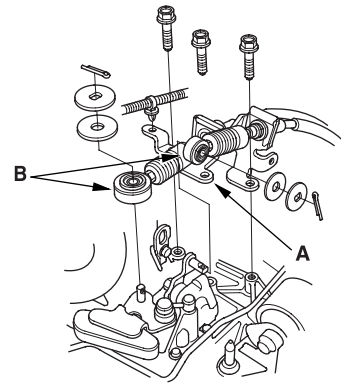
1. Write down the frequencies for the radio's preset buttons. Disconnect the negative (-) cable first, then the positive (+) cable from the battery. Remove the battery.
2. Remove the air cleaner housing (see step 5 on [page 05-3](#)).
3. Remove the intake duct (see step 6 on [page 05-3](#)).
4. Remove the battery tray (A).
5. Disconnect the transmission ground cable (B).



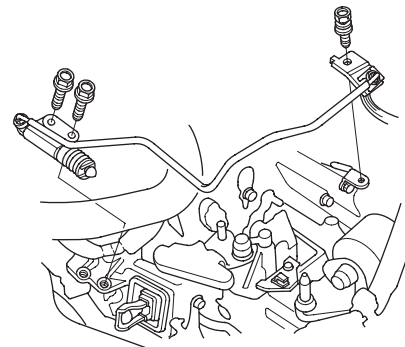
6. Disconnect the vehicle speed sensor (A) and the back-up light switch connector (B).



7. Remove the cable bracket (A), then disconnect the cables (B) from the top of the transmission housing. Carefully remove both cables and the bracket together so as not to bend the cables.



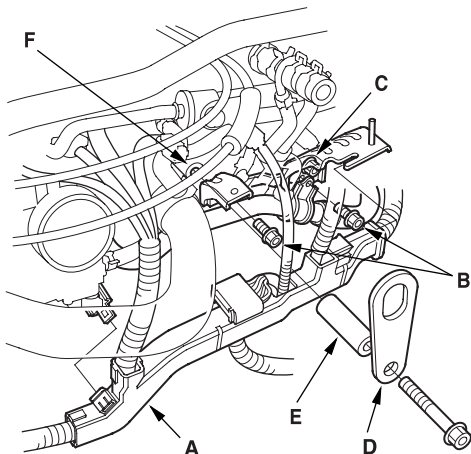
8. Carefully remove the slave cylinder so as not to bend the clutch line. Do not operate the clutch pedal once the slave cylinder has been removed.



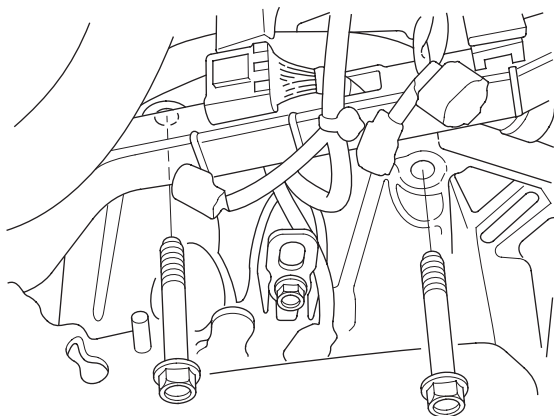
(cont'd)

## Transmission Removal (cont'd)

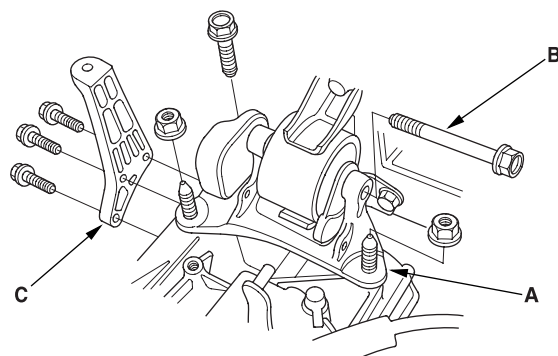
9. Remove the harness cover (A), water pipe mounting bolts (B), and loosen the air cleaner housing mounting bracket bolt (C). Lower the water pipe slightly.



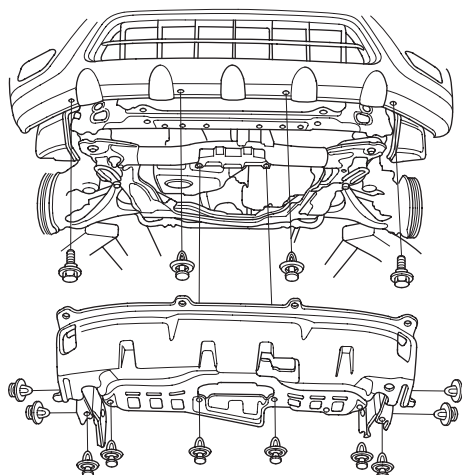
10. Attach an engine hanger (D) with a collar (E) to the bolt hole (F) on the engine cylinder block.
11. Remove the two upper transmission mounting bolts.



12. Remove the transmission mount bracket (A) and transmission mounting bolt (B).

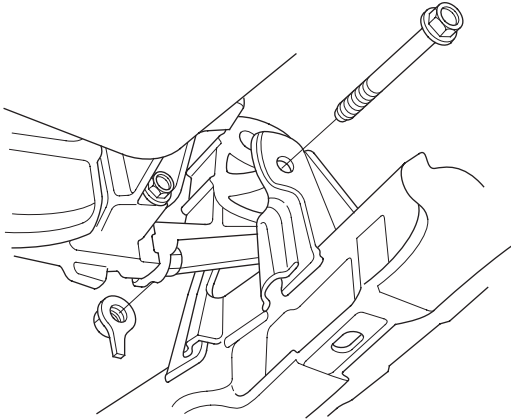


13. Remove the air cleaner bracket (C).
14. Raise vehicle and make sure it is securely supported.
15. Drain the transmission fluid. Reinstall the drain bolt using a new washer ([see page 13-4](#)).
16. Remove the splash shield.

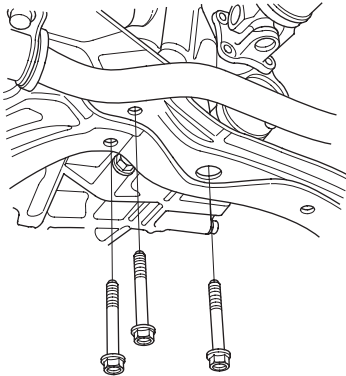




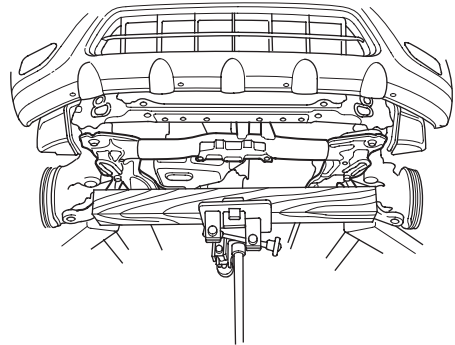
17. Remove the driveshafts (see page 16-3).
18. Remove the intermediate shaft (see page 16-19).
19. For 4WD models, remove the propeller shaft (see page 16-33).
20. Remove the front engine mount bracket mounting bolt.



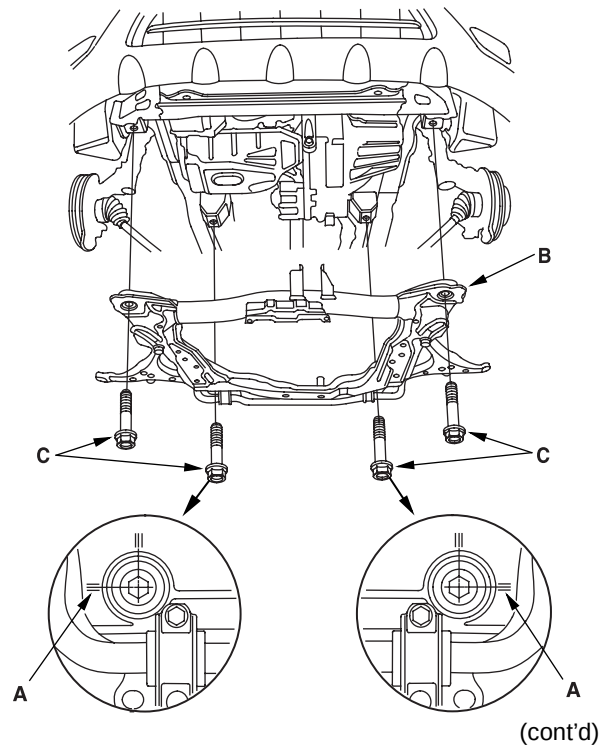
21. Remove the three bolts securing the transmission rear mount.



22. Support the subframe with a 4 x 4 x 40 in. piece of wood and a jack.



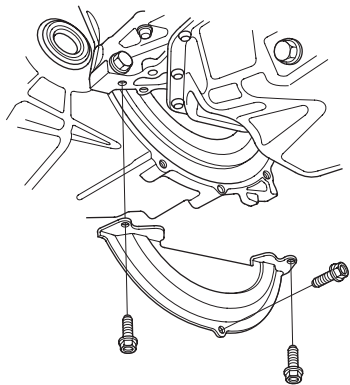
23. Make reference marks (A) on the front suspension subframe (B) and mounting bolts (C), then remove the front suspension subframe.



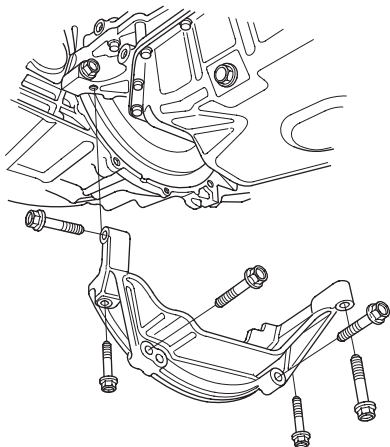
## Transmission Removal (cont'd)

24. Remove the clutch cover.

2.0 / model:

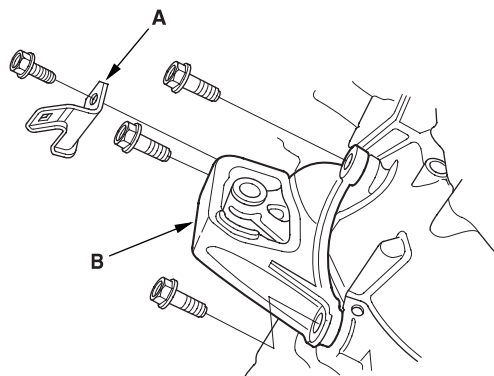


2.4 / model:

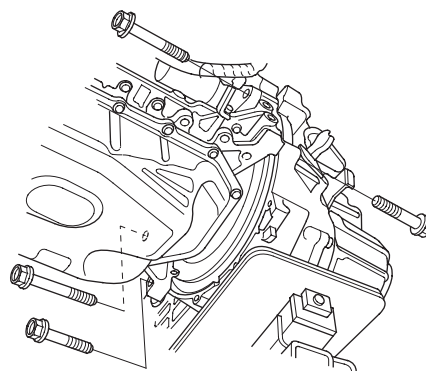


25. Remove the harness clamp (A).

26. Remove the front engine mount (B).

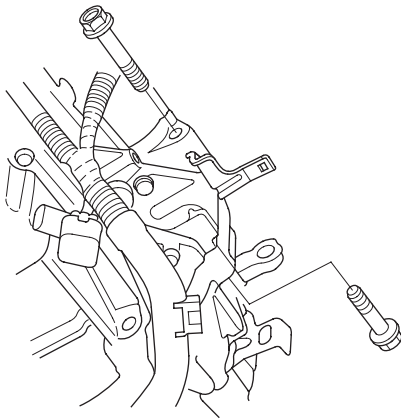


27. Place the transmission jack under the transmission and remove the four lower transmission mounting bolts.

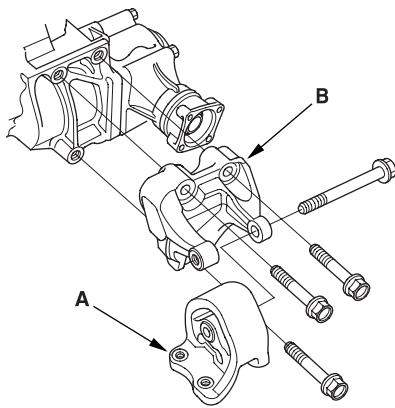




- 28.** Remove the two lower transmission mounting bolts.



- 29.** Pull the transmission away from the engine until the transmission mainshaft clears the clutch pressure plate, then lower the transmission on the transmission jack.
- 30.** Remove the transmission rear mount (A) and the transmission rear mount bracket (B).



- 31.** Remove the boot (A), the release fork (B), and the release bearing (C) from the transmission (D).

